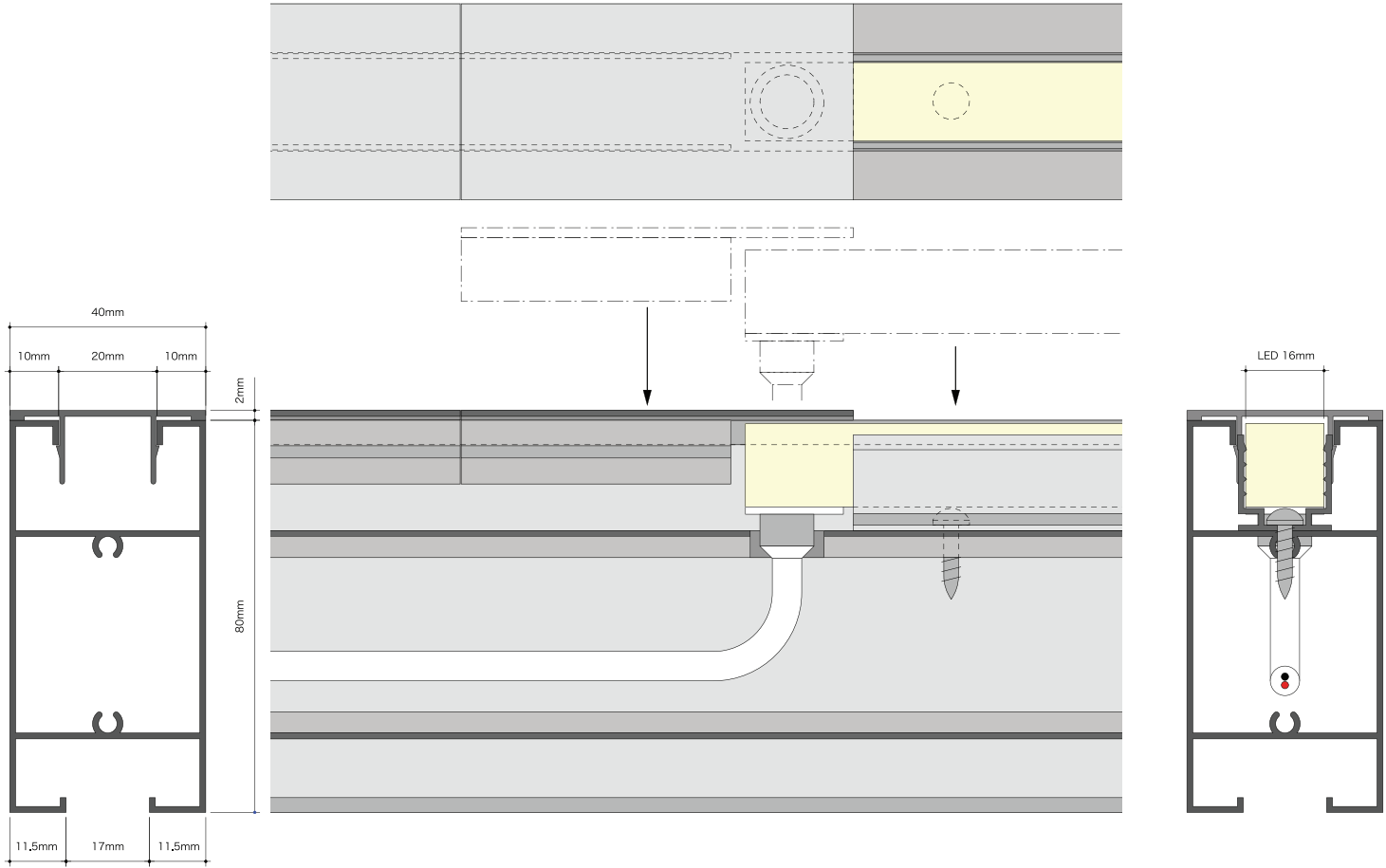


TECHNICAL INFORMATION

Lighting And LED Data

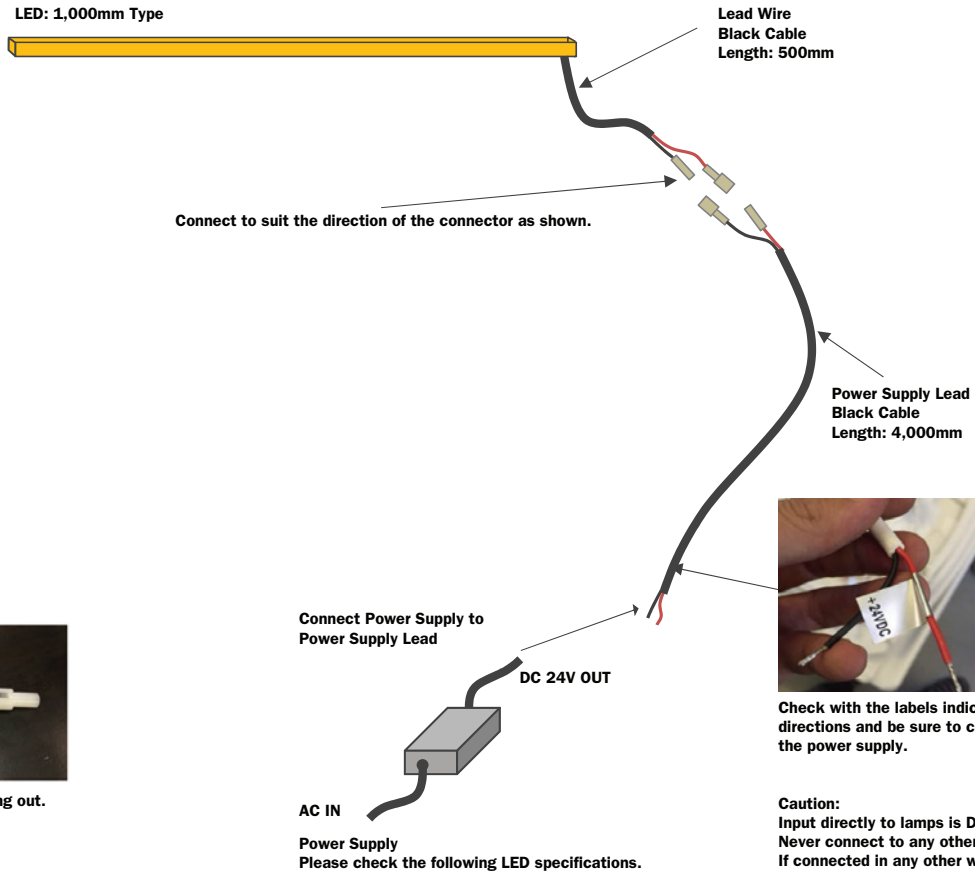


TECHNICAL INFORMATION

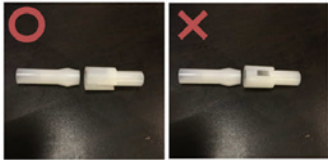
Lighting And LED Data

LED Technical Data
 Voltage: DC 24V
 Rate Power/meter 10.5 W
 Lumens/meter 450 Lm
 Color Type

Warm White: 2725K (±145K)
 Cool White: 4503K (±243K)



Connector Joint
 Red (+) Black (-)
 Match the colors when connecting



Connector is disconnected by pulling out.

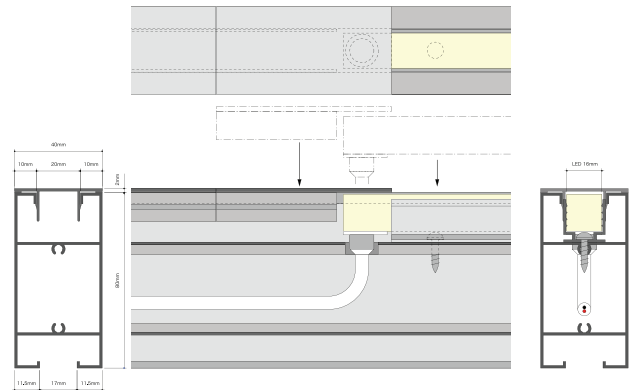
Caution:
 Input directly to lamps is DC 24V only.
 Never connect to any other power supply.
 If connected in any other way it may cause electrical and smoke damage.

Caution:
 Input directly to lamps is DC 24V only.
 Never connect to any other power supply.
 If connected in any other way it may cause electrical and smoke damage.

The Maximum Cable length with Strip Loading

Power Loading	22AWG/ 0.34mm ²	20AWG/ 0.53mm ²	18AWG/ 0.82mm ²	17AWG/ 1.04mm ²	16AWG/ 1.38mm ²	14AWG/ 2.07mm ²	12AWG/ 3.29mm ²	10AWG/ 5.26mm ²
10W	36m	60m	100m	120m	140m	240m	400m	600m
20W	18m	30m	50m	60m	70m	120m	200m	300m
30W	12m	20m	30m	38m	45m	80m	130m	200m
40W	8m	15m	22m	28m	35m	60m	95m	140m
50W	6m	12m	18m	22m	28m	48m	75m	105m
60W	5m	10m	15m	18m	22m	36m	60m	88m
70W	/	8m	12m	14m	18m	30m	50m	72m
80W	/	6m	10m	11m	14m	24m	40m	58m
90W	/	4m	7m	8m	10m	18m	30m	45m
100W	/	/	5m	6m	7m	12m	22m	32m
110W	/	/	3m	4m	5m	8m	15m	22m
120W	/	/	2m	2.5m	3m	5m	8m	12m

Note : The cable length does not include the 0.3m front connector cable;
 The connection between 2 cables should be reliable if the connection is a must;
 The yellow data will be rarely used

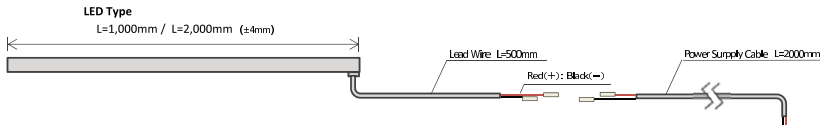


TECHNICAL INFORMATION

Lighting And LED Data



Customized Length of Injection-Moulded Light Ra-FR-Pro F22B-D24V Specification



Product Specification

Product Name.	LED Flex Ribbon Light
Article No.	Ra-FR-Pro F22B-D24V
Color type	Warm White : 2725±145K
	Cool White : 4503±243K
LED Chip	Nichia SMD 5050
Material	PVC-Ivory White
Working Voltage	DC 24V
Rated Power/mtr	10.5W
LED Qty/mtr	108 LEDs
Luminous flux / m	450 lm
IP Rating	IP 68
IK Rating	IK 08

Recommended Power supply

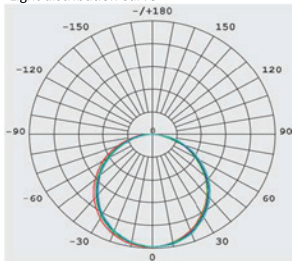
Power supply for LED [1,000mm]

Article No.	LPF-25-24
Power Rating	25.2 W
Maximum Length	1m
Size (LxW xH)	148 x40 x32 (mm)
IP Rating	IP 67

Power supply for LED [2,000mm]

Article No.	LPF-40-24
Power Rating	40.08 W
Maximum Length	2m
Size (LxW xH)	162.5 x43 x32 (mm)
IP Rating	IP 67

Light distribution curve



Horizontal illumination

